

● General Specifications

<b>Standard Resistance Values:</b>	1k, 2k, 5k, 10k (Ω)	<b>Contact Resistance Variation:</b>	Below 3% C.R.V.
<b>Special Practical Resistance Values:</b>	500, 20k, 50k, 100k (Ω)	<b>Power Rating:</b>	0.2W
<b>Total Resistance Tolerance:</b>	Standard Class ±15% (L) Precision Class ±10% (K)	<b>Electrical Travel:</b>	300° ±5°
<b>Independent Linearity Tolerance:</b>	Standard Class ±2.0% Precision Class ±1.0%	<b>Mechanical Travel:</b>	360° (Endless)
<b>Resolution:</b>	Essentially infinite	<b>Insulation Resistance:</b>	Over 1,000MΩ at 500V.D.C.
<b>Output Smoothness:</b>	Below 0.1% against input voltage	<b>Dielectric Strength:</b>	1 minute at 500V.A.C.
		<b>Starting Torque:</b>	Below 1mN•m (10gf•cm)
		<b>Resistance Temperature Coefficient:</b>	±400p.p.m./ °C
		<b>Mass:</b>	Approx. 5g

● Special Specifications Available

Extra taps (Available up to 1 tap), Shaft with front and rear extension (Rear shaft with 1mm dia. and 10mm length), With stopper (Rotating angle becomes 310° and stopper strength is 0.3N•m [3kgf•cm]), Special electrical travel, Shaft dia. (Ø3.175mm)•with inch dimensions, Special machining on the shaft.

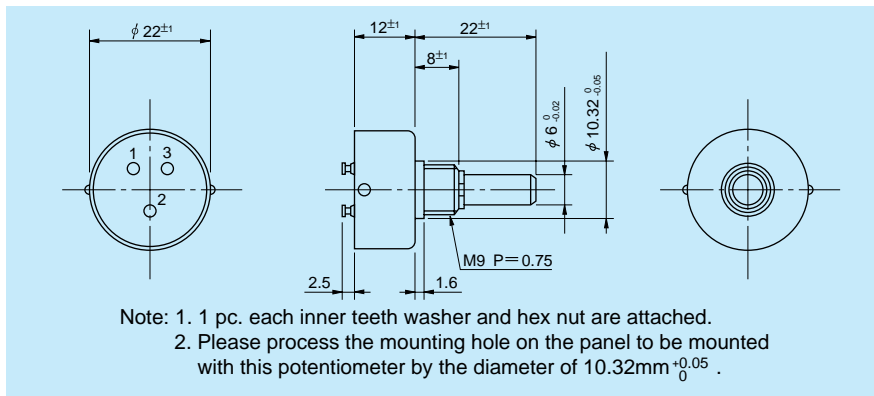
LOW-COST ITEM

Conductive Plastic

MODEL FCP22AC

(Bushingmount)

● Standard Dimensions



● General Specifications

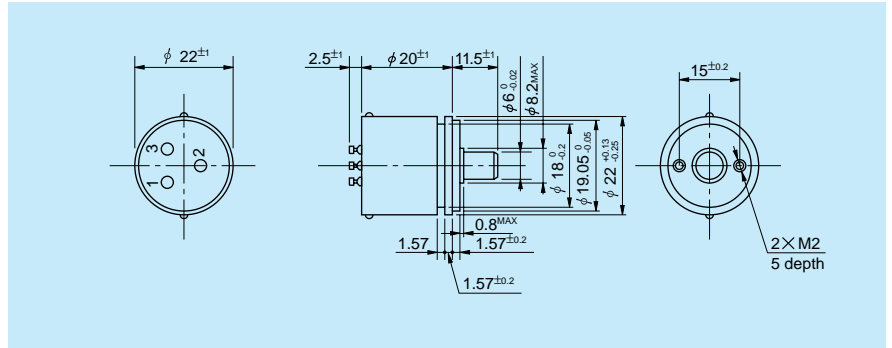
<b>Standard Resistance Values:</b>	1k, 2k, 5k, 10k (Ω)	<b>Contact Resistance Variation:</b>	Below 2% C.R.V.
<b>Special Practical Resistance Values:</b>	500, 20k, 50k, 100k (Ω)	<b>Power Rating:</b>	1.0W
<b>Total Resistance Tolerance:</b>	Standard Class ±15% (L) Precision Class ±10% (K)	<b>Electrical Travel:</b>	320° ±5°
<b>Independent Linearity Tolerance:</b>	Standard Class ±1.5% Precision Class ±1.0%	<b>Mechanical Travel:</b>	360° (Endless)
<b>Resolution:</b>	Essentially infinite	<b>Insulation Resistance:</b>	Over 1,000MΩ at 500V.D.C.
<b>Output Smoothness:</b>	Below 0.1% against input voltage	<b>Dielectric Strength:</b>	1 minute at 500V.A.C.
		<b>Starting Torque:</b>	Below 5mN•m (50gf•cm)
		<b>Resistance Temperature Coefficient:</b>	±400p.p.m./ °C
		<b>Mass:</b>	Approx. 30g

● Special Specifications Available

Extra taps (Available up to 1 tap), Shaft with front and rear extension (Rear shaft with 3mm dia. and 20mm length), With stopper (Rotating angle becomes 320° and stopper strength is 0.9N•m [9kgf•cm]), Special electrical travel, Shaft dia. (Ø6.35mm)•bushing with inch dimensions, Special machining on the shaft.



● Standard Dimensions



● General Specifications

**Standard Resistance Values:** 1k, 2k, 5k, 10k ( $\Omega$ )  
**Special Practical Resistance Values:** 500, 20k, 50k, 100k ( $\Omega$ )  
**Total Resistance Tolerance:** Standard Class  $\pm 15\%$  (L) Precision Class  $\pm 10\%$  (K)  
**Independent Linearity Tolerance:** Standard Class  $\pm 1.0\%$  Precision Class  $\pm 0.5\%$   
**Resolution:** Essentially infinite  
**Output Smoothness:** Below 0.1% against input voltage

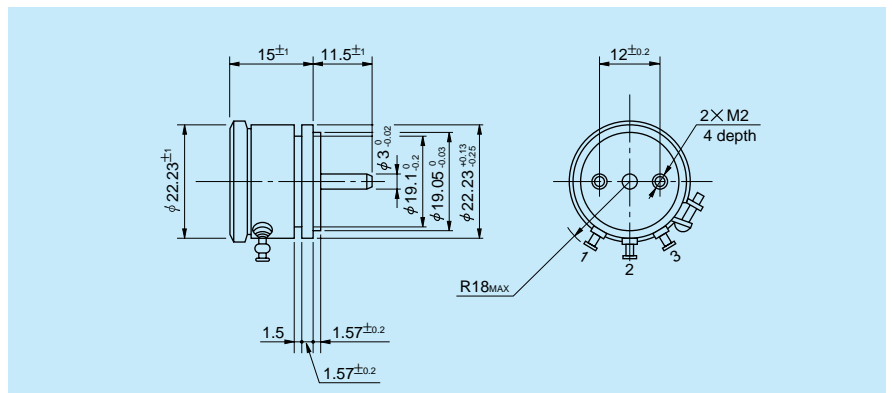
**Contact Resistance Variation:** Below 2% C.R.V.  
**Power Rating:** 1.0W  
**Electrical Travel:**  $320^\circ \pm 5^\circ$   
**Mechanical Travel:**  $360^\circ$  (Endless)  
**Insulation Resistance:** Over 1,000M $\Omega$  at 500V.D.C.  
**Dielectric Strength:** 1 minute at 500V.A.C.  
**Starting Torque:** Below 5mN•m (50gf•cm)  
**Resistance Temperature Coefficient:**  $\pm 400$ p.p.m./ $^\circ\text{C}$   
**Mass:** Approx. 30g

● Special Specifications Available

Extra taps (Available up to 1 tap), Shaft with front and rear extension (Rear shaft with 3mm dia. and 20mm length), With stopper (Rotating angle becomes  $320^\circ$  and stopper strength is 0.9N•m [9kgf•cm]), Special electrical travel, Shaft dia. ( $\phi 6.35$ mm), Special machining on the shaft, With ball bearings incorporated.

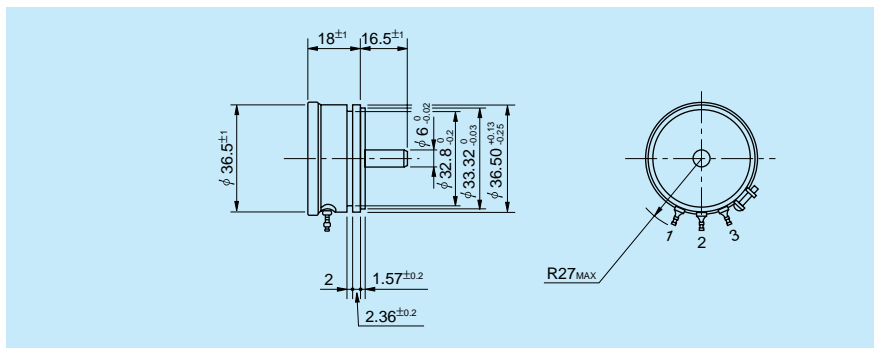


● Standard Dimensions





● Standard Dimensions



● General Specifications

**Standard Resistance**

<b>Values:</b>	1k, 2k, 5k, 10k (Ω)
<b>Special Practical Resistance Values:</b>	500, 20k, 50k, 100k, 200k (Ω)
<b>Total Resistance Tolerance:</b>	Standard Class ±10% (K)
<b>Independent Linearity Tolerance:</b>	Standard Class ±0.5%
	Precision Class ±0.25%
	Super Precision Class ±0.1%
<b>Resolution:</b>	Essentially infinite
<b>Output Smoothness:</b>	Below 0.1% against input voltage

**Contact Resistance**

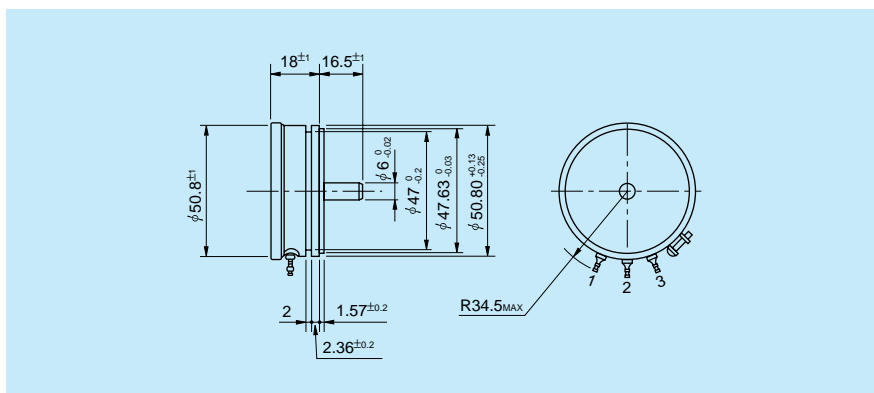
<b>Variation:</b>	Below 2% C.R.V.
<b>Power Rating:</b>	2.0W
<b>Electrical Travel:</b>	340° ±5°
<b>Mechanical Travel:</b>	360° (Endless)
<b>Insulation Resistance:</b>	Over 1,000MΩ at 1,000V.D.C.
<b>Dielectric Strength:</b>	1 minute at 1,000V.A.C.
<b>Starting Torque:</b>	Below 3mN•m (30gf•cm)
<b>Resistance Temperature Coefficient:</b>	±400p.p.m./°C
<b>Mass:</b>	Approx. 60g

● Special Specifications Available

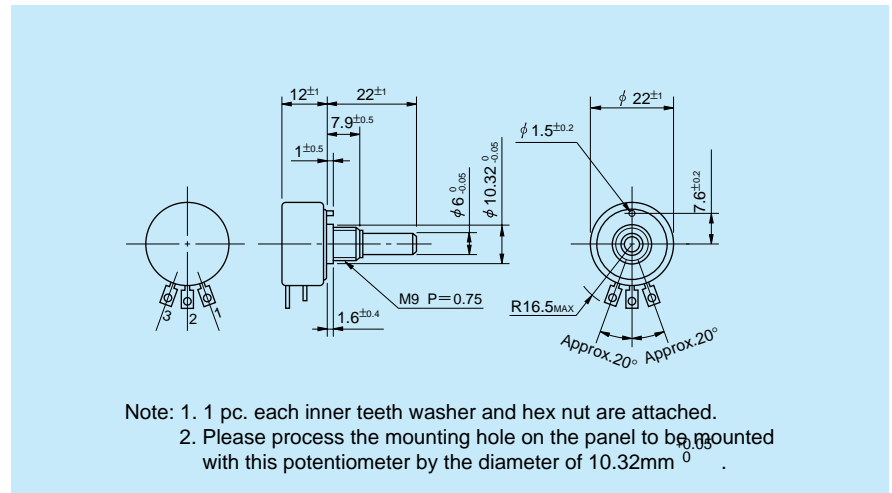
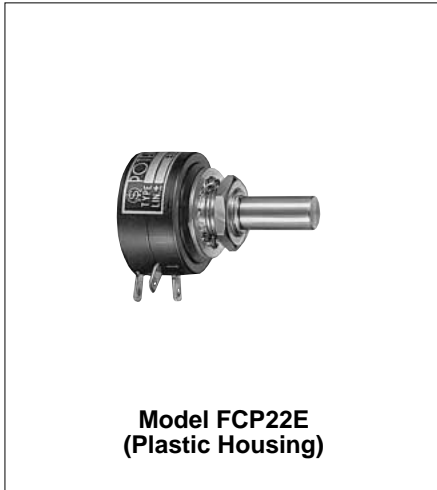
Extra taps (Available up to 3 taps), Multi-ganged (Available up to 7 gangs, Housing length is extended by 12mm per 1 gang), Shaft with front and rear extension (Rear shaft with 6mm dia. and 15mm length), With stopper (Rotating angle becomes 320° and stopper strength is 0.9N•m [9kgf•cm]), Special electrical travel, Shaft dia. (∅6.35mm) with inch dimensions, Special machining on the shaft.



● Standard Dimensions



### ● Standard Dimensions



### ● General Specifications

#### Standard Resistance

Values: 1k, 2k, 5k, 10k ( $\Omega$ )

#### Special Practical

Resistance Values: 500, 20k, 50k, 100k ( $\Omega$ )

#### Total Resistance

Tolerance: Standard Class  $\pm 15\%$  (L)  
Precision Class  $\pm 10\%$  (K)

#### Independent Linearity

Tolerance: Standard Class  $\pm 1.5\%$   
Precision Class  $\pm 1.0\%$

Resolution: Essentially infinite

Output Smoothness: Below 0.1% against input voltage

#### Contact Resistance

Variation: Below 2% C.R.V.

Power Rating: 1.0W

Electrical Travel:  $320^\circ \pm 5^\circ$

Mechanical Travel:  $360^\circ$  (Endless)

Insulation Resistance: Over 1,000M $\Omega$  at 500V.D.C.

Dielectric Strength: 1 minute at 500V.A.C.

Starting Torque: Below 5mN•m (50gf•cm)

#### Resistance

#### Temperature

Coefficient:  $\pm 400$ p.p.m./ $^\circ\text{C}$

Mass: Approx. 20g

### ● Special Specifications Available

Extra taps (Available up to 1 tap), Shaft with front and rear extension (Rear shaft with 6mm dia. and 20mm length), Multi-ganged (Available up to 10 gangs), With stopper (Rotating angle becomes  $320^\circ$  and stopper strength is 0.6N•m [6kgf•cm]), Special electrical travel, Shaft dia. ( $\varnothing 6.35$ mm)•bushing with inch dimensions, Special machining on the shaft.