



Subject to change without notice!
Rev. 0701

Metal separator M-Pulse / Digital+

GFC

Application

The GFC has been developed as a compact version of the GF series for applications where separators from the GF series cannot be used because of restricted space conditions. For this reason the detection performance is lower than that of the GF series. Like the GF series the GFC also has a stainless steel housing and a stable supporting frame. Typical fields of application are on filling systems or separating plants.

Function

In the upper part of the separator the sensor coil of the metal detector is situated. If metal falls through the sensor the signal is collected and processed by the operating electronics. Subsequently the electronics precisely excites the pulse for piloting the ejection flap. The flap is opened and metal is separated from the product stream. The robust, pneumatic driven mechanics guarantees durability. Depending on the electronics the function of the ejection can be monitored. Further installations, for example a pressure control device, constantly control the correct function.



Metal separator GFC

Specific characteristics

- maintenance-free mechanics
- very big transmission ports available
- robust, pneumatic-driven ejection mechanics (optional)
- according to the application different electronics available
- design with or without ejection mechanics available
- protection class IP65
- stainless steel housing
- compact design



Type ⁴	GFC 100		GFC 120		GFC 150		GFC 200		GFC 250		GFC 300	
Mechanical data												
Height with ejection unit (A)	450 mm		530 mm		600 mm		910 mm		1.050 mm		1.095 mm	
Dimension (X x C)	320 x 450 mm		340 x 450 mm		400 x 505 mm		510 x 615 mm		640 x 800 mm		800 x 940 mm	
Nominal width - D	100 mm		120 mm		150 mm		200 mm		250 mm		300 mm	
Material-ejection unit	stainless steel											
Material-base frame	stainless steel											
Material-protection tube ²	POM											
Conditions of use												
Storage temperature	-10°C .. 60°C											
Operating temperature	0°C .. 50°C											
Protection class	IP65											
Electrical connection	see datasheet of the control unit											
Pneumatic connection	4-6 bar, filtered, free of water and oil; self-sealing-coupling - fitting NW 7,2											
Troughput ³	16.000 l/h		25.000 l/h		43.000 l/h		82.000 l/h		135.000 l/h		200.000 l/h	
Bulk characteristics	free falling											
Sensitivity¹												
Material - Test pieces	Fe	SS	Fe	SS	Fe	SS	Fe	SS	Fe	SS	Fe	SS
M-Pulse	0,7	1,1	1,0	1,4	1,1	1,8	1,6	2,4	2,0	3,1	2,6	4,1
Digital+	0,8	1,3	1,1	1,5	1,2	2,0	1,8	2,5	2,2	3,5	2,8	4,5

Order code:

Electronic Type of separator
M-Pulse / Digital+ GFC 100 - GFC 300 (e.g.: M-Pulse GFC 150)

¹ The actual sensitivity depends on various factors. Unfavourable environmental conditions or vibrations can reduce the sensitivity. Conductive test material can also influence the sensitivity. For obliging information please contact our service or sales department. Our service includes product tests in our headquarters. (all data in mm)

² Other materials available.

³ Measured with granulate PET - grain dimension 2 - 3mm.

⁴ Bigger dimensions and in-between sizes available on request.



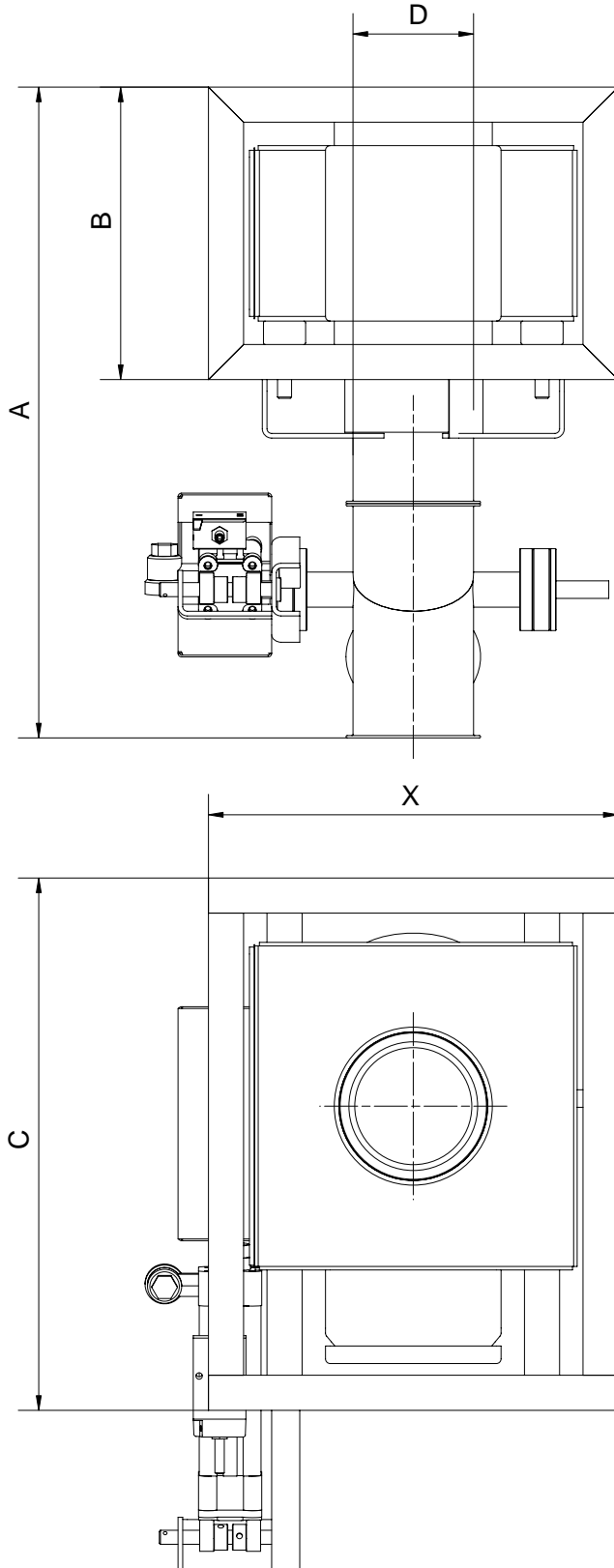
Special designs & accessories

All devices of the GFC series are serially delivered without ejection mechanics. Adapted mechanics are separately available for all dimensions. For the connecting of the device to a piping optionally a kit consisting of 3 welding socket pieces, 3 snap closing circlips and 3 cooper gaskets is available. Please inform us about the necessary accessories when placing your order.

Designation	Order number
Pneumatic guard	When ordering please add option 45
Wear-resistant model (for very abrasive bulk material)	When ordering please add option 44
Ejector guard (Indicates malfunctions of the ejection unit)	When ordering please specify
Ejection flap EX-S-100	08410192011
Ejection flap EX-S-120	08410192012
Ejection flap EX-S-150	08410192013
Ejection flap EX-S-200	08410192014
Ejection flap EX-S-250	08410192015
Ejection flap EX-S-300	08410192016
Ejection flap EX-K-100 wear-resistant w. maintenance opening	08410193022
Ejection flap EX-K-100 wear-resistant w. window	08410193015
Ejection flap EX-K-120 wear-resistant w. maintenance opening	08410193023
Ejection flap EX-K-120 wear-resistant w. window	08410193012
Ejection flap EX-K-150 wear-resistant w. maintenance opening	08410193024
Ejection flap EX-K-150 wear-resistant w. window	08410182013
Ejection flap EX-K-200 wear-resistant w. maintenance opening	08410193025
Ejection flap EX-K-200 wear-resistant w. window	08410182016
Ejection flap EX-K-250 wear-resistant w. maintenance opening	08410193026
Ejection flap EX-K-250 wear-resistant w. window	08410182014
Ejection flap EX-K-300 wear-resistant w. maintenance opening	08410193027
Connecting kit GF / GFC 100	08410310000
Connecting kit GF / GFC 120	08410310001
Connecting kit GF / GFC 150	08410310002
Connecting kit GF / GFC 200	08410310003
Connecting kit GF / GFC 250	08410310004
Connecting kit GF / GFC 300	08410310005

Dimensions incl. separating filter

Metal separator GFC



ØD [mm]	A [mm]	B [mm]	C [mm]	X [mm]
100	450	200	450	320
120	530	250	450	340
150	600	250	505	400
200	910	300	615	510
250	1050	390	800	640
300	1095	390	940	800